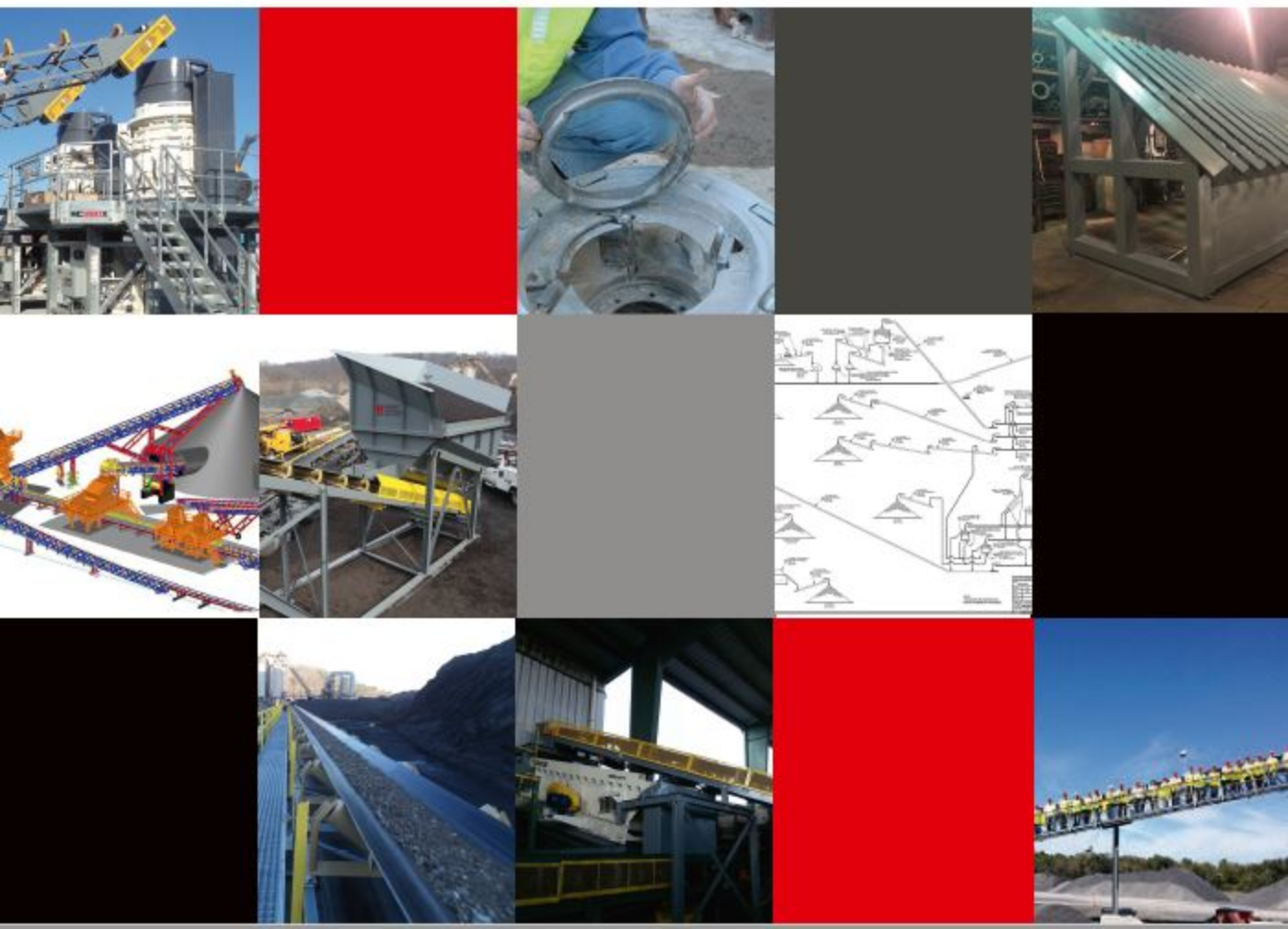




CASE STUDY

Clean product doubles production




Better with Kemper

SPECS: 17' wide x 9' -6" high x 7' deep grizzly for 24" run-of-mine material

CHALLENGE: Customer wanted to sort/clean loads of process run quarry rock with a 992 loader

SOLUTION: Kemper Equipment custom designed a heavy duty static grizzly with a maximum bucket size of 17' wide, sloped to ensure good flow and sturdy enough to handle large rock

RESULT: Customer reported that our Kemper static grizzly cleans and doubles production of R-6 limestone. Ask your Kemper rep how it can work for you!



For innovation,
knowledge, safety
and commitment,
trust Kemper
610-273-2066



www.kemperequipment.com
sales@kemperequipment.com